

# Art

E t e r n a l   S e a s o n s

b y

C l i f f o r d  
B e r t i n

# ETERNAL SEASONS COLLECTION



*“Each knife stroke is a testament to the beauty of seasons past and a hope for the future—a harmonious blend of France’s timeless charm and a deep reverence for our planet, calling for peace, love, and unity in the face of a changing world.”*

This collection reflects the quiet contrast of winter’s chill and the warmth of nostalgia, embodying hope for serenity and unity amid the global climate crisis. It is a heartfelt homage to France—a land that deeply resonates with my spirit. Growing up enchanted by its culture, from the humour of Louis de Funès to the culinary brilliance of Julia Child and Jacques Pépin, France has long been an anchor of inspiration.

Created during a journey that was both an artistic pilgrimage and a personal reconnection, the works echo the beauty of Paris, the tranquillity of Normandy, and the allure of the South of France. They weave together my paternal heritage and the dynamic vibrancy of my Haitian–American identity, offering a symphony of colours that celebrates the interconnectedness of nature, humanity, and the enduring influence of cultural roots. This collection is a call for peace, love, and a renewed commitment to cherishing our shared planet.

# CLIFFORD BERTIN, ABSTRACT ARTIST



*“I create like it’s my last day  
on earth”*

*Clifford Bertin is a Haitian-American, self-taught abstract painter currently based between Haiti, France and Canada. Passionate about culinary art and painting since childhood, he draws from these two mediums to express himself.*

*His paintings are inspired by Voudou culture, spiritual vibrations and are passionately translated onto his canvases using colours to convey his interpretation of Haitian culture in its many forms. The hidden messages that can be found in his paintings spontaneously transport us to a spiritual and vibrant world that is both subtle and enigmatic, and lead to multiple interpretations of his work.*

*His paintings are done in series and phases that are carefully thought of and tell stories around themes of joy, spirituality, and societal preoccupations.*

*Clifford has participated in both individual and group exhibitions in public spaces and has work in private collections all over the world.*



**B**

*Eternal Seasons Collection, 2024*

*147 cm x 213 cm (58 inches x 84 inches)  
Acrylic on Canvas*



**C**

*Eternal Seasons Collection, 2024*

*147 cm x 213 cm (58 inches x 84 inches)  
Acrylic on Canvas*



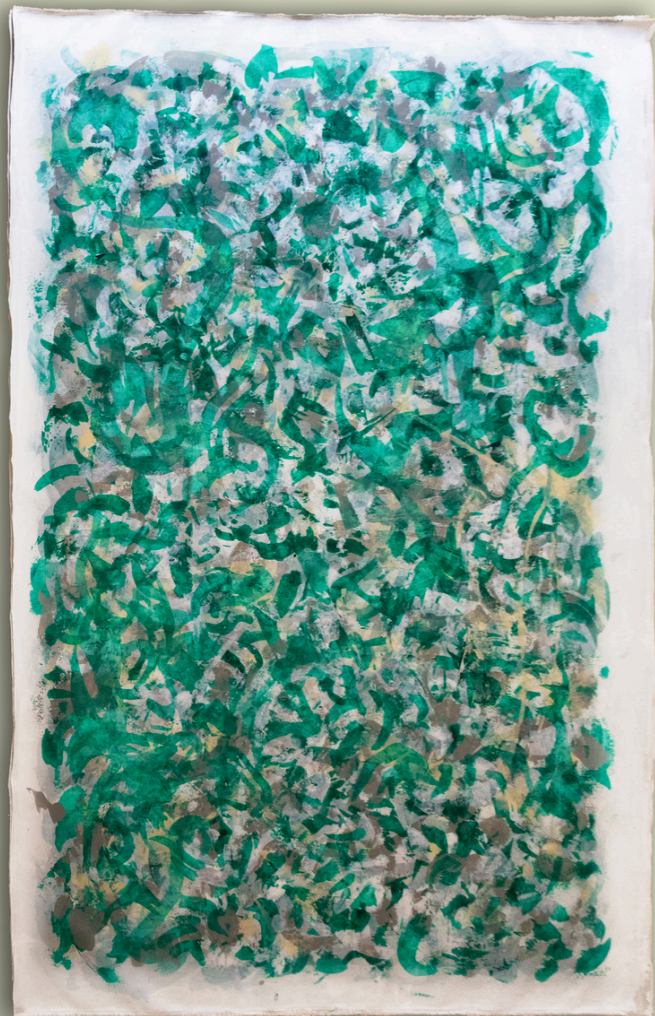
C

*Eternal Seasons Collection, 2024*  
147 cm x 213 cm (58 inches x 84 inches)  
Acrylic on Canvas



C

*Eternal Seasons Collection, 2024*  
147 cm x 213 cm (58 inches x 84 inches)  
Acrylic on Canvas



É

*Eternal Seasons Collection, 2024*

*147 cm x 213 cm (58 inches x 84 inches)  
Acrylic on Canvas*



V

*Eternal Seasons Collection, 2024*

*147 cm x 213 cm (58 inches x 84 inches)  
Acrylic on Canvas*

